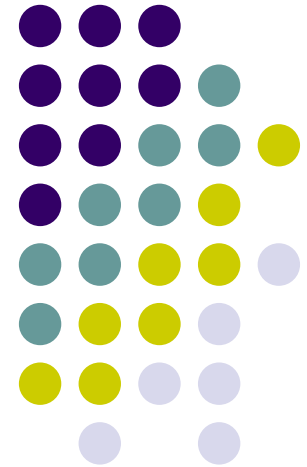
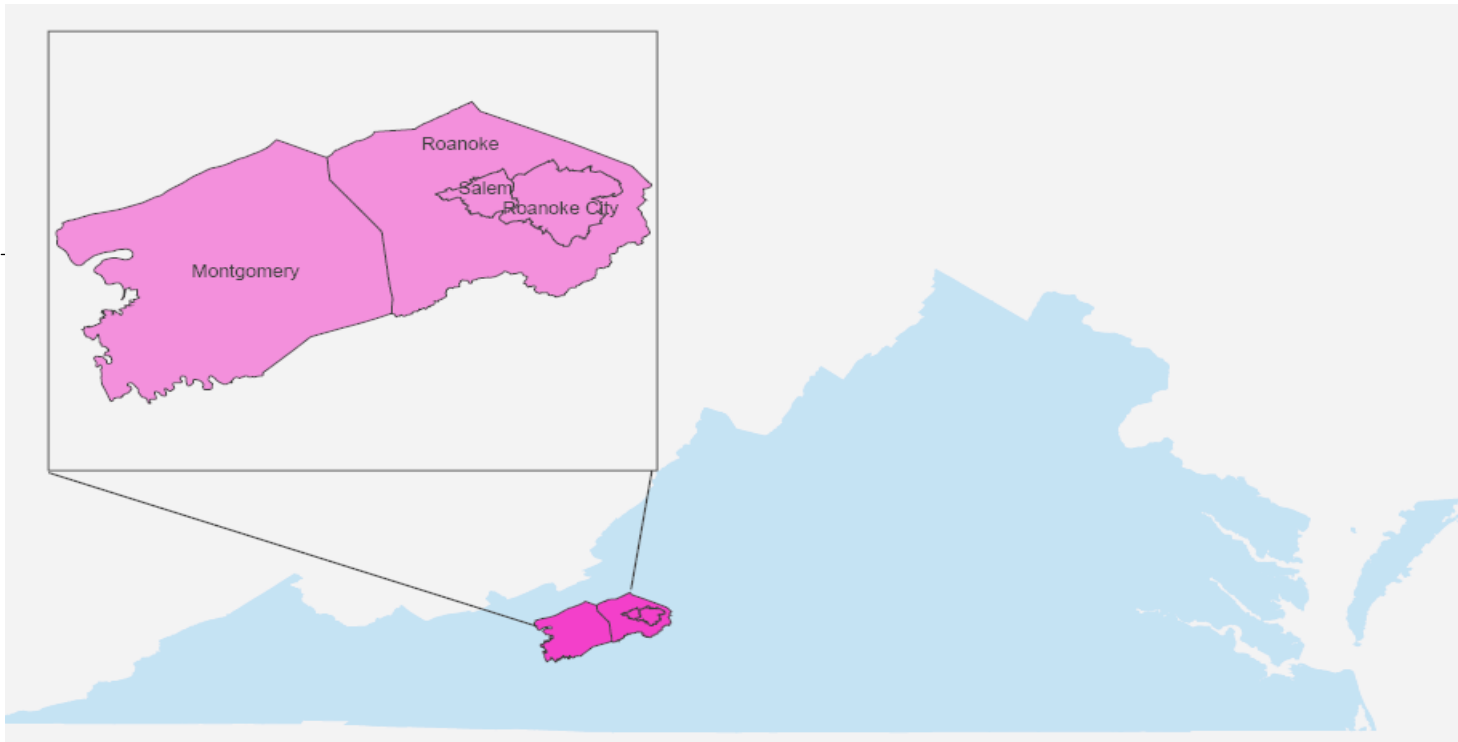


CRRAFT Implementation in the New River Valley/ Roanoke Valley



By

Muxian Fang, Brett Lovell

May 4, 2006

About CRRAFT

(Client, Referral, Ridership, and Financial Tracking Transit Management System)

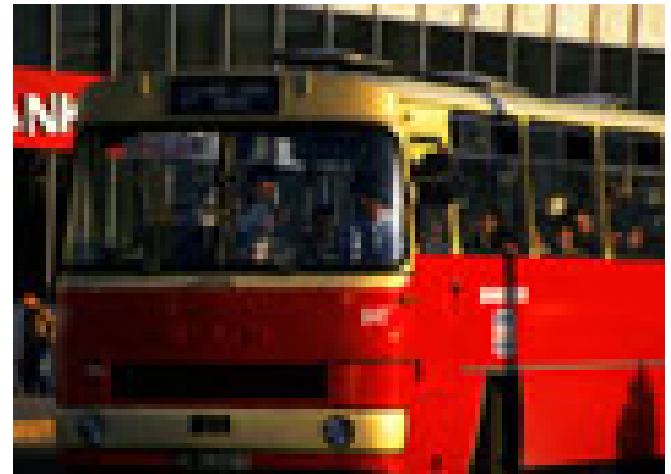


What is CRRAFT?

- A web-based software program developed by ATR Institute of the University of New Mexico
- It bridges the gap between human service agencies and rural transit system cultures
- Data are stored on a central server to maintain integrity
- Access is controlled through passwords and hierarchical levels of access

What can CRRAFT help?

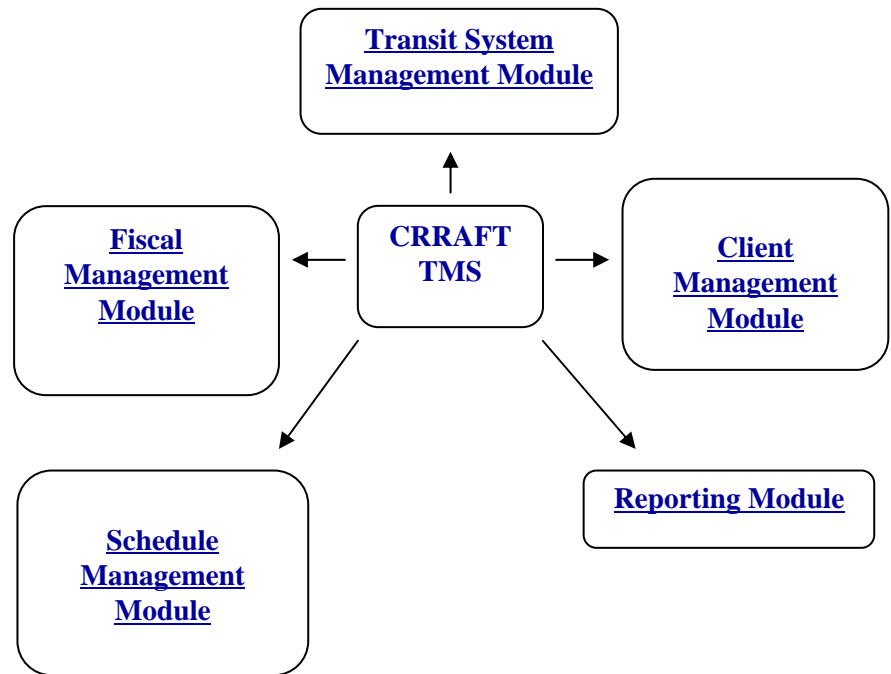
- Track Finances
- Facilitate Tracking Multiple Funding Sources
- Facilitate Client Tracking
- Track Ridership Data
- Facilitate Ride Scheduling
- Facilitate Reporting





Why CRRAFT Is Important?

- The area has a large population with special transportation needs, but they can not get the transportation services they need.
- CRRAFT – a community level coordination program- will allow for more trips to be provided to more people, within program funding levels.



CRRAFT'S Major Components

How CRAFFT Is Implemented?



- To work efficiently, it will need a more formal organizational structure, procedures, and administrative support.
- First, determine the number and circumstances of people needing transportation.
- Second, estimate current services gaps and deficiencies.
- Then, one set of programmers and a centralized help desk could provide the area's transportation agencies with the information systems support as well as individualized assistance which would be available via telephone and e-mail as needed.
- Finally, cooperation among participating human service and public transit agencies is required to ensure that all stakeholders have appropriate and adequate training to understand each others role and successfully deal with passenger behaviors.



Strengths of CRRAFT

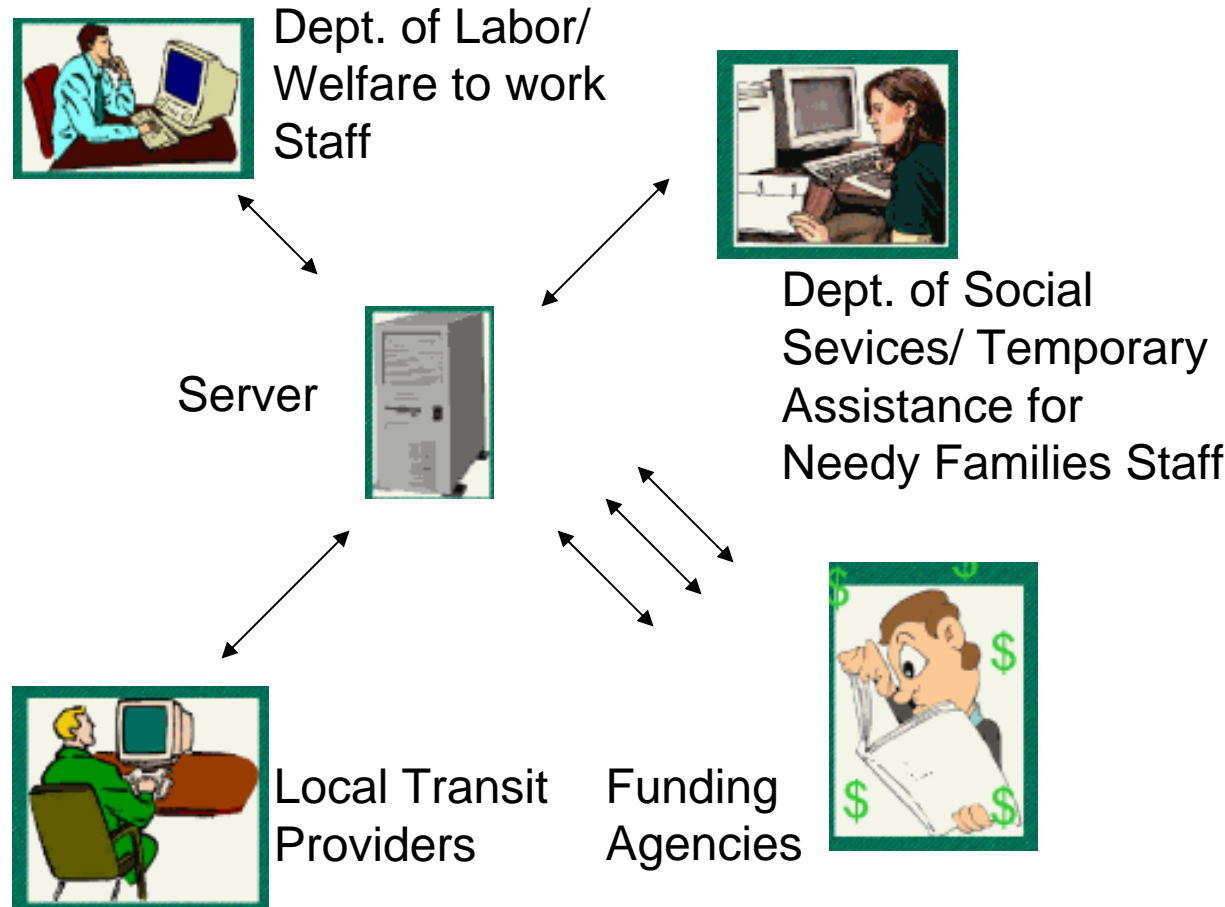


- Integrates human service client transportation referral and service delivery with daily rural public transit operations.
- Provides passengers with an increased seamlessness in transportation service
- Generates financial and client tracking reports, which meet each funding agency's criteria, including those required by the FTA
- Decreases the administrative burden on small transit systems
- Provides funding agencies with tools to facilitate planning and to maintain administrative and fiscal accountability.



Potential Funding Streams

- **FTA JARC 3037**
(Federal Transit Administration JARC 3037)
- **FTA Rural 5351**
(Federal Transit Administration Rural 5351)
- **FTA E and D 5310**
(Federal Transit Administration E and D 5310)
- **VDOL/ WTW**
(Virginia Dept. of Labor/ Welfare to Work)
- **VDSS/TANF**
(Virginia Dept. of Social Services/ Temporary Assistance for Needy Families)



Potential Involved Organizations



- **Transportation Services Providers, such as:**
 - RADAR
 - Blacksburg Transit
 - Roanoke-Blacksburg Smart Way
 - RIDE Solutions

- **Supporting Agencies, such as:**
 - Virginia Department of Medical Assistance Services
 - Montgomery County Department of Social Services
 - Roanoke Valley-Alleghany Regional Commission
 - New River Valley Planning Commission



References

- Espinosa, Judith M. (2003). “Creating Intelligent, Coordinated Transit: Moving New Mexico the Smart Way”. Transportation Research Board.
- Conklin, Schweiger, Marks, Wiggins, Timpone, and Gross. (2003). “Rural Transit ITS Best Practices”. www.itscosts.its.dot/its
- Holm, Eric. (2002). “Client Referral, Ridership, and Financial Tracking System: An ITS Application”. PowerPoint Presentation. www.unm.edu/atr/CRRRAFT.html
- [Developing the Client Referral, Ridership and Financial Tracking \(CRRRAFT\) Transit Management System: CRRRAFTing a Bridge to Coordinated Interagency Transportation](#) (PDF: 796KB/21 pages) presented at the 82nd Transportation Research Board Annual Meeting, January 2003. Accepted for publication in the 2003 Transportation Research Record, Journal of the Transportation Research Board.
- Intelligent Transportation Systems. U.S. Department of Transportation. “Evaluation of CRRRAFT”. www.itsdocs.fhwa.dot.gov/JPODOCS/REPTS_TE/Chapter_3.htm